

PC Resident with Medicaid

CRISIS

Timeframe of Behavioral Health need:
Response within 2 Hours

URGENT

Timeframe of Behavioral Health need:
Response within Same Day

EARLY

Timeframe of Behavioral Health need:
Response within 2 Days or Longer

EMERGENCY

Mobile Outreach Crisis Team
24/7 (800) 576-7764

INPATIENT

MDC
<https://mdc-hope.org/>

RRC
<https://riinternational.com/listing/recovery-response-center-fife/>

INPATIENT

MDC
<https://mdc-hope.org/>

Fairfax
Kirkland, WA
<https://www.fairfaxhospital.com/>

Ollala
<https://www.olalla.org/>

SeaMar Treatment Center
<https://www.seamar.org/pierce-bh-tacoma-treatment.html>

Cascade Behavioral Health
<https://www.cascadebh.com/>

Wellfound BH Hospital
<https://www.wellfound.org/>

Adult INPT Psychiatric Care (MHS)
<https://www.multicare.org>

Greater Lakes Mental Health
<https://www.glmhc.org/>

American Lake VA
<https://www.pugetsound.va.gov/services/mentalhealth.asp>

Telecare E & T
<https://www.telecarecorp.com/pierce->

OUTPATIENT

MDC
<https://mdc-hope.org/>

Telecare T-CAT
<https://www.telecarecorp.com/telecare-community-alternative-teams-tcat>

Comprehensive Life Resources
<https://www.comprehensiveliferesources.org/>

Multicare Behavioral Health
<https://www.multicare.org>

SeaMar Behavioral Health
<https://www.seamar.org/pierce-bh-tacoma.html>

Greater Lakes Mental Health
<https://www.glmhc.org/>

Ollala
<https://www.olalla.org/>

Northwest Integrated Health
<https://nwih.com/>

Consejo Counseling & Referral
<https://consejocounseling.org/>

OUTPATIENT

Northwest Integrated Health
<https://nwih.com/>

Castele, Williams & Associates
<https://www.castelewilliamscbh.com/>

MDC
<https://mdc-hope.org/>

American Lake VA
<https://www.pugetsound.va.gov/services/mentalhealth.asp>

Telecare T-CAT
<https://www.telecarecorp.com/telecare-community-alternative-teams-tcat>

Consejo Counseling & Referral
<https://consejocounseling.org/>

Comprehensive Life Resources
<https://www.comprehensiveliferesources.org/>

Rainier Behavioral Health
<https://rainierbehavioralhealth.com/>

SeaMar Behavioral Health
<https://www.seamar.org/pierce-bh-tacoma.html>

Multicare Behavioral Health
<https://www.multicare.org>

Greater Lakes Mental Health
<https://www.glmhc.org/>

Ollala
<https://www.olalla.org/>

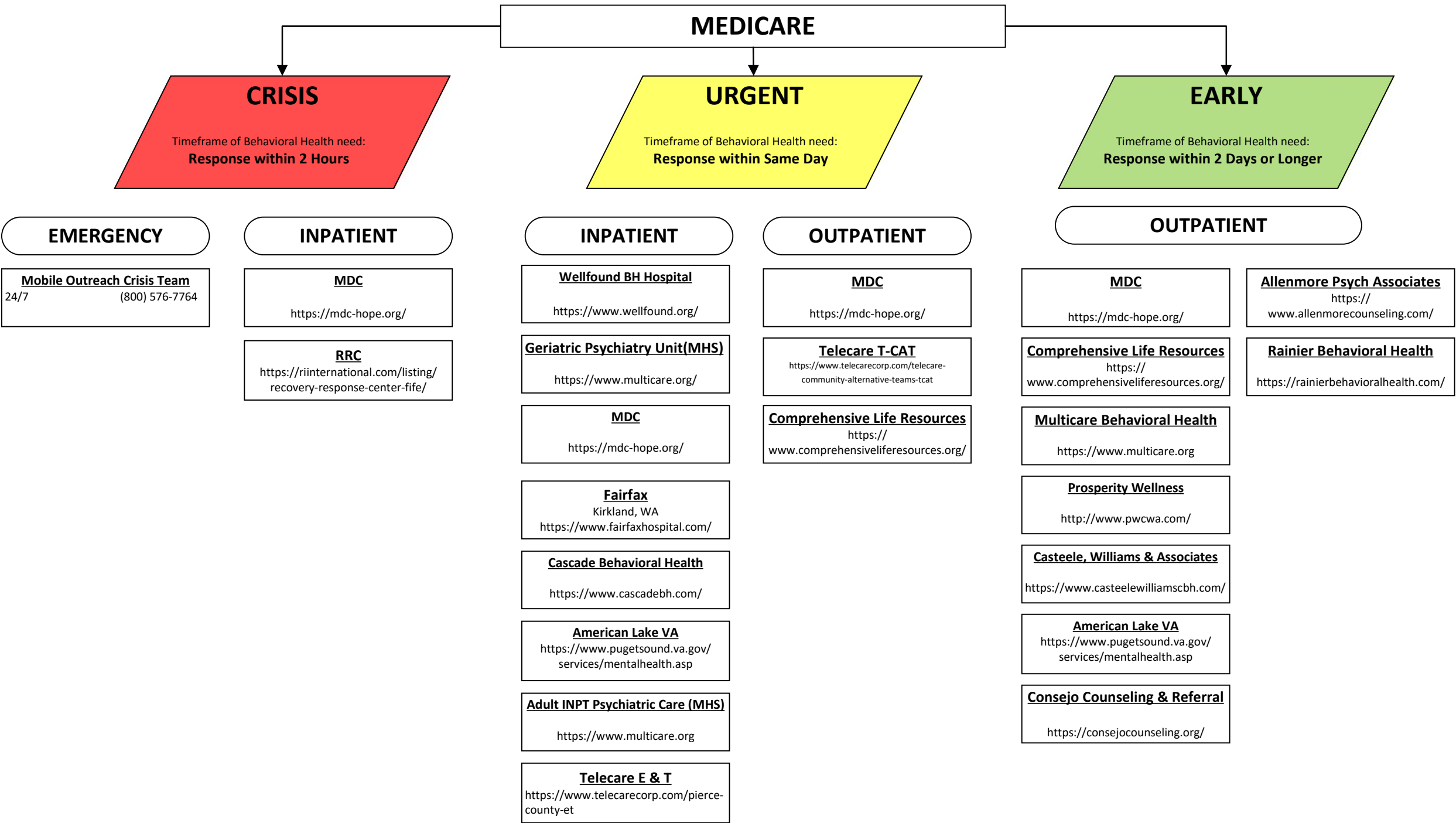
Prosperity Wellness
<http://www.pwcwa.com/>

Telecare E & T
<https://www.telecarecorp.com/pierce-county-et>

<https://consejocounseling.org/>

<http://www.pwcwa.com/>

***INPATIENT REQUIRES OUTPATIENT ASSESSMENT**



*INPATIENT REQUIRES OUTPATIENT ASSESSMENT

PRIVATE

CRISIS

Timeframe of Behavioral Health need:
Response within 2 Hours

URGENT

Timeframe of Behavioral Health need:
Response within Same Day

EARLY

Timeframe of Behavioral Health need:
Response within 2 Days or Longer

EMERGENCY

INPATIENT

INPATIENT

OUTPATIENT

OUTPATIENT

Mobile Outreach Crisis Team
24/7 (800) 576-7764

RRC
<https://riinternational.com/listing/recovery-response-center-fife/>

MDC
<https://mdc-hope.org/>

Wellfound BH Hospital
<https://www.wellfound.org/>

Geriatric Psychiatry Unit(MHS)
<https://www.multicare.org/>

Adult INPT Psychiatric Care (MHS)
<https://www.multicare.org>

MDC
<https://mdc-hope.org/>

Ollala
<https://www.olalla.org/>

Fairfax
Kirkland, WA
<https://www.fairfaxhospital.com/>

Cascade Behavioral Health
<https://www.cascadebh.com/>

American Lake VA
<https://www.pugetsound.va.gov/services/mentalhealth.asp>

Telecare E & T
<https://www.telecarecorp.com/pierce-county-et>

Northwest Integrated Health
<https://nwih.com/>

Telecare T-CAT
<https://www.telecarecorp.com/telecare-community-alternative-teams-tcat>

Comprehensive Life Resources
<https://www.comprehensiveliferesources.org/>

Northwest Integrated Health
<https://nwih.com/>

Castele, Williams & Associates
<https://www.castelewilliamsdbh.com/>

Prosperity Wellness
<http://www.pwcwa.com/>

Multicare Behavioral Health
<https://www.multicare.org>

American Lake VA
<https://www.pugetsound.va.gov/services/mentalhealth.asp>

Ollala
<https://www.olalla.org/>

Northwest Relationships
<https://www.northwestrelationships.com/>

Confidential Associates
<http://confidentialassoc.com/>

Kaiser Behavioral Health
<https://healthy.kaiserpermanente.org/washington/front-door>

Consejo Counseling & Referral
<https://consejocounseling.org/>

Rainier Behavioral Health
<https://rainierbehavioralhealth.com/>

Allenmore Psych Associates
<https://www.allenmorecounseling.com/>

Puget Mental Health
<https://pugetmentalcare.com/>

*INPATIENT REQUIRES OUTPATIENT ASSESSMENT

NO INSURANCE / SELF-PAY

CRISIS
 Timeframe of Behavioral Health need:
Response within 2 Hours

URGENT
 Timeframe of Behavioral Health need:
Response within Same Day

EARLY
 Timeframe of Behavioral Health need:
Response within 2 Days or Longer

EMERGENCY

Mobile Outreach Crisis Team
 24/7 (800) 576-7764

INPATIENT

RRC
<https://riinternational.com/listing/recovery-response-center-fife/>

MDC
<https://mdc-hope.org/>

INPATIENT

MDC
<https://mdc-hope.org/>

American Lake VA
<https://www.pugetsound.va.gov/services/mentalhealth.asp>

Fairfax
 Kirkland, WA
<https://www.fairfaxhospital.com/>

Ollala
<https://www.olalla.org/>

Adult INPT Psychiatric Care (MHS)
<https://www.multicare.org>

SeaMar Treatment Center
<https://www.seamar.org/pierce-bh-tacoma-treatment.html>

Geriatric Psychiatry Unit(MHS)
<https://www.multicare.org/>

Telecare E & T
<https://www.telecarecorp.com/pierce-county-et>

OUTPATIENT

MDC
<https://mdc-hope.org/>

Telecare T-CAT
<https://www.telecarecorp.com/telecare-community-alternative-teams-tcat>

Comprehensive Life Resources
<https://www.comprehensiveliferesources.org/>

SeaMar Behavioral Health
<https://www.seamar.org/pierce-bh-tacoma.html>

OUTPATIENT

MDC
<https://mdc-hope.org/>

Telecare T-CAT
<https://www.telecarecorp.com/telecare-community-alternative-teams-tcat>

Comprehensive Life Resources
<https://www.comprehensiveliferesources.org/>

Prosperity Wellness
<http://www.pwcwa.com/>

Northwest Relationships
<https://www.northwestrelationships.com/>

Castele, Williams & Associates
<https://www.castelewilliamsccbh.com/>

SeaMar Behavioral Health
<https://www.seamar.org/pierce-bh-tacoma.html>

Karis Collective
<https://www.kariscollective.com/index.php>

American Lake VA
<https://www.pugetsound.va.gov/services/mentalhealth.asp>

Consejo Counseling & Referral
<https://consejocounseling.org/>

Allenmore Psych Associates
<https://www.allenmorecounseling.com/>

Puget Mental Health
<https://pugetmentalcare.com/>

Rainier Behavioral Health
<https://rainierbehavioralhealth.com/>

***INPATIENT REQUIRES OUTPATIENT ASSESSMENT**

DEMENTIA / ALZHEIMERS

CRISIS
Timeframe of Behavioral Health need:
Response within 2 Hours

URGENT
Timeframe of Behavioral Health need:
Response within Same Day

EARLY
Timeframe of Behavioral Health need:
Response within 2 Days or Longer

EMERGENCY

Mobile Outreach Crisis Team
24/7 (800) 576-7764

INPATIENT

Geriatric Psychiatry Unit(MHS)
<https://www.multicare.org/>

INPATIENT

NW Hosp. Geropsych – Seattle
www.uwmedicine.org

Cascade Behavioral Health
<https://www.cascadebh.com/>

OUTPATIENT

Telecare T-CAT
<https://www.telecarecorp.com/telecare-community-alternative-teams-tcat>

Sound Options
<https://www.soundoptions.com/>

OUTPATIENT

Telecare T-CAT
<https://www.telecarecorp.com/telecare-community-alternative-teams-tcat>

Sound Options
<https://www.soundoptions.com/>

American Lake VA
<https://www.pugetsound.va.gov/services/mentalhealth.asp>

Consejo Counseling & Referral
<https://consejocounseling.org/>

Multicare Neurology
<https://www.multicare.org/>

Allenmore Psych Associates
<https://www.allenmorecounseling.com/>

Alzheimer Association
24/7 (800) 272-3900
www.alz.org

***INPATIENT REQUIRES OUTPATIENT ASSESSMENT**